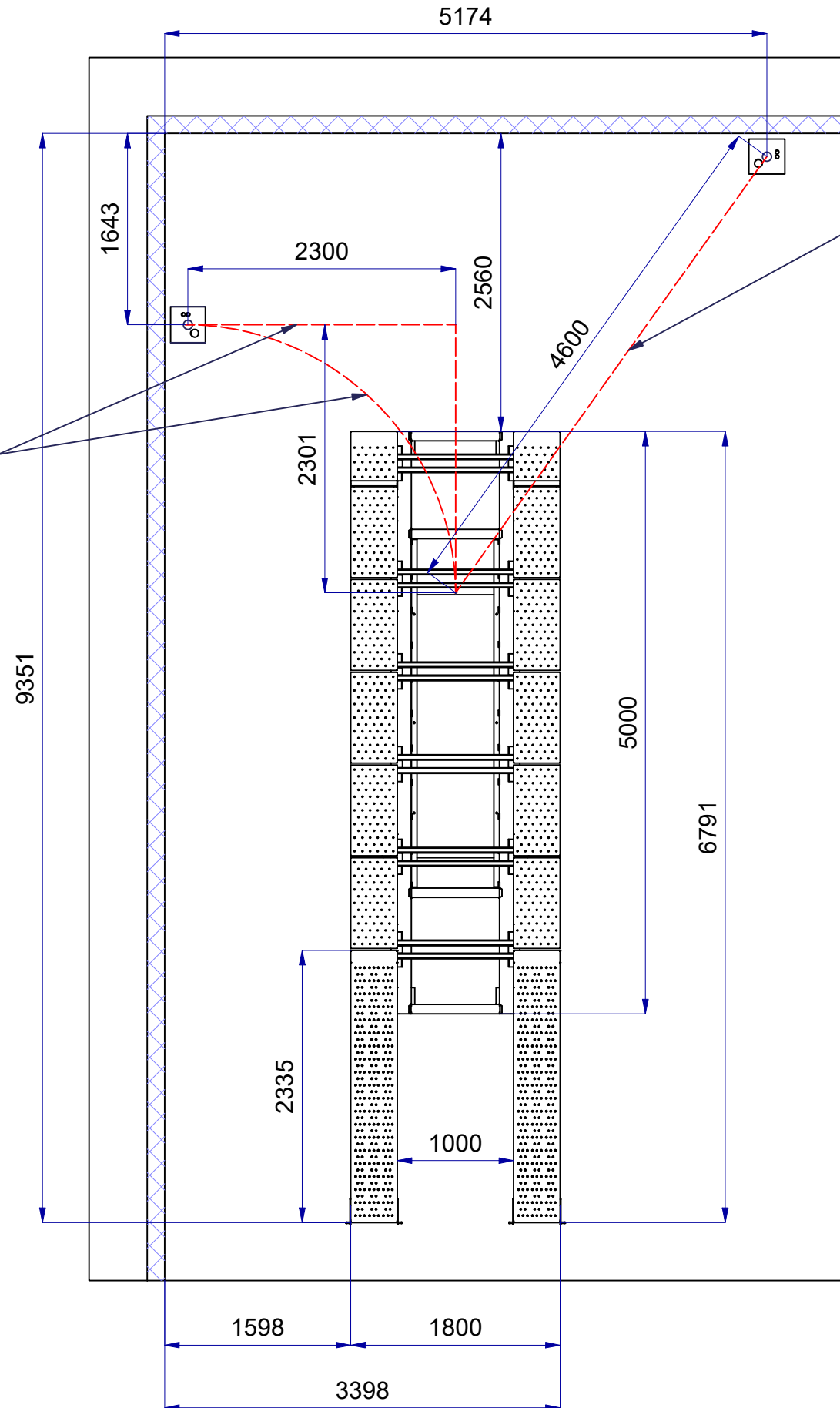
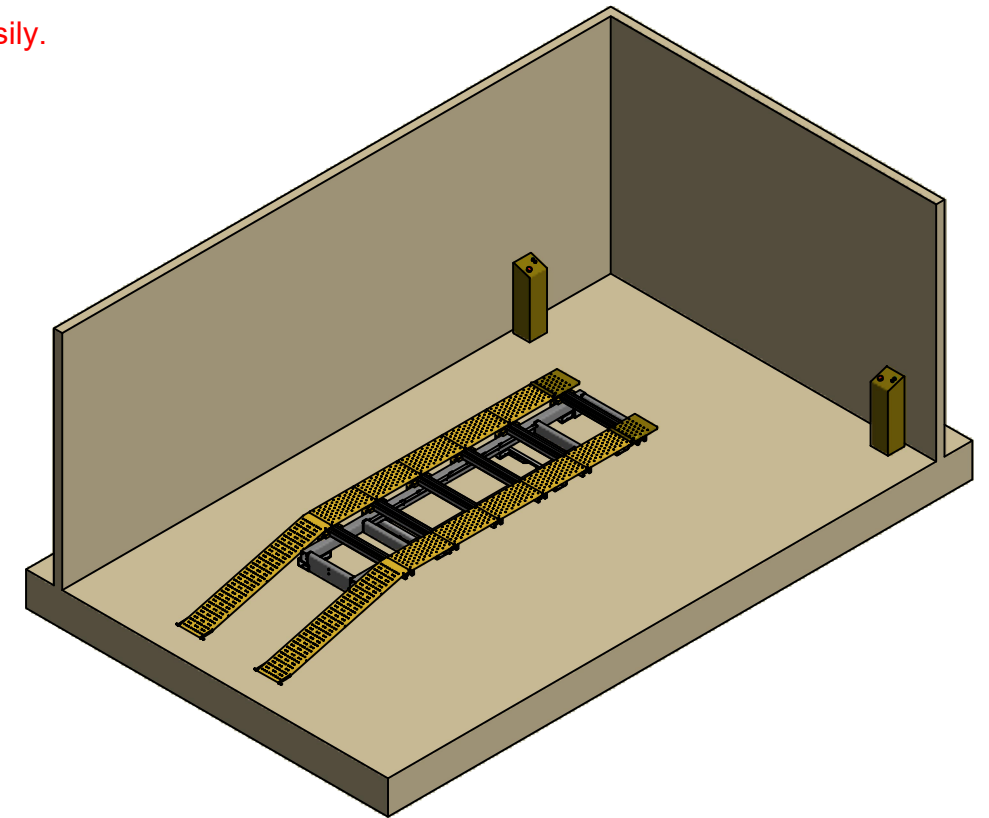


PLAN VIEW (1:50)



CAUTION!
The corrugated pipe that from the contraline, (control pulpits) goes up to the relative lifts must have min Ø80 the cables can be inserted easily. Not supplied by Spanesi. Excavation pit at 200 mm of depth.

CAUTION!
The corrugated pipe that from the contraline, (control pulpits) goes up to the relative lifts must have min Ø80 the cables can be inserted easily. Not supplied by Spanesi. Excavation pit at 200 mm of depth.



ILLUSTRATIVE LAYOUT NOT CONSTRUCTIVE

ALL THE METAL BASEMENT HAVE TO BE CONNECT TO A SUITABLE PLANT EARTH

Revisione: A00	Codice : ES001593 RP-22-00198	Data: 05/12/2022
Denominazione: MSH EQUIPMENT (106 5m)		
SPANESI Spa Via Praarie 56/II Loc.Cavino - 35010 S.Giorgio delle Pertiche (PD) - (ITALY)	Disegnato: SQUAGIN A.	Formato A3
	Verificato: SIMONE ZANON	
Il presente disegno di esclusiva proprietà dell'azienda non può venire riprodotto ne trasmesso a terzi senza autorizzazione scritta. Ogni trasgressione verrà punita a norma di legge.		